



# Meet the Teaching Team

## Year 4

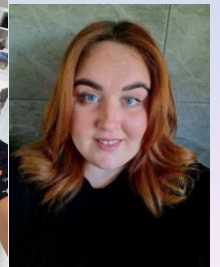
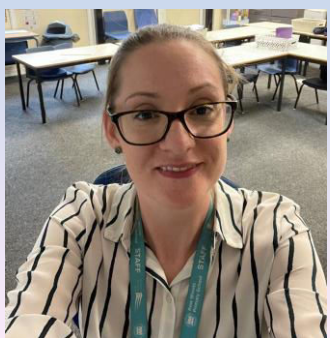
2023 – 2024

# Teaching Teams:

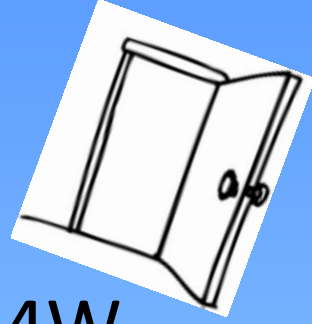
Class K – Miss Williams & Mrs McNally

Class W - Miss Fletcher

Teaching Assistants – Mr McGlincy, Miss Molloy,  
Miss Jenkinson & Miss Matthew



# Daily Entry and Exit Points



Enter school via playground doors (3 4K, 2 4W  
from 8:45am – 8:55am

Exit via playground doors at 3:15pm

All children should be brought to and collected from  
school by an adult (over 16)

If your child is being collected by somebody who has  
not collected before please let us know. A responsible  
adult, age 16 or over, can collect. A password to be  
used on collection is recommended.

Please support by ensuring your child is brought to  
school on time and collected on time.

# Equipment Required

School bag

Reading Book / Record

Water Bottle

Healthy snack KS2

Packed lunch (if not on school dinners)

Coat

Mobile phones are not permitted in school

# Lunch Time Arrangements

**The children have lunchtime between 12-12.20pm**

**Children will go outside and play at 12.20-12.45**

**Children having packed lunch should bring a healthy, balanced lunch each day (no sweets, chocolate, fizzy drinks or nuts)**

The National Curriculum forms the basis of the curriculum at Kew Woods Primary School identifying what pupils are expected to know and understand.

However, our additional school curriculum provides our pupils with wider knowledge, skills and understanding unique to our school.

# Basic Principles

1. Learning is a change to **long-term** memory.
2. Our aims are to ensure that our pupils experience a wide breadth of study and have, by the end of each key stage, **long-term memory** of an ambitious body of **knowledge**

# Curriculum Design

Based on evidence from cognitive science, learning has not taken place until it is in the long term memory.

Within our curriculum, retrieval of previously learned content is frequent and regular, which increases both storage and retrieval strength.

Retrieval practice of previous knowledge is built in to promote learning.



# Curriculum Overview

English and Mathematics taught daily.

Spellings taught 3 times per week.

Weekly lessons of Handwriting, Computing, Science, Religious Education, Life Learning, Music and French

Physical Education lessons twice per week plus Daily Mile

Other foundation subjects (Art, Design and Technology, History, Geography) are taught half termly

# Forest School

	Autumn Term 1	Autumn Term 2	Spring Term 1	Spring Term 2	Summer Term 1	Summer Term 2
Tuesday	2K	2W	1K	1W	2K	2W
Wednesday	6K	6W	5K	5W	6K	6W
Friday	4K	4W	3K	3W	4K	4W

Please make sure your child comes to school with an old change of clothes:

Long sleeve top, pants, outdoor shoes and waterproof coat.

Your child will come home muddy!



# Relationship, Health and Sex Education

We want all of our pupils to grow up healthy, happy, safe, and able to manage the challenges and opportunities of modern Britain.

Primary age children are taught Relationships, Health and Sex Education in age appropriate ways, often alongside other areas of the curriculum such as science.

# RSE Focus:

Families and people who care for me

Caring friendships

Respectful relationships

Online relationships

Being Safe

**Kew Key Driver** - being healthy, happy and safe

# RSE focus:

Mental Well Being

Internet safety and harms

Physical health and fitness

Healthy eating

Facts and risks associated with drugs,  
alcohol and tobacco

Health prevention

First aid

Changing adolescent body

# RSE

Add any specific year group information eg  
Y1 body parts / Y5 puberty / Y6 conception  
and appropriate touch etc

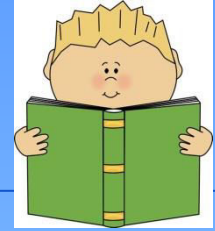
Information about the RSE curriculum was  
shared on website last year / reminders in  
newsletters

# Educational Visits

No trips have been planned yet, but we will give plenty of notice.



# Reading



- As it is a key skill, reading is of high importance at Kew Woods, and plays an integral part in each lesson.
- Children are expected to have their book and reading record in school every day. Books will be changed when they have been read.
- Guided reading lessons taught 3 times per week
- We expect children to read every night at home and for **parents to record this in yellow reading diaries.**
- Encourage parents to visit the local library and share other books at home
- **Kew Key Driver**- developing a love of reading
- Please encourage your child to re-read texts to consolidate their understanding.



# Spelling

Tests will take place every Friday and new spellings given out too.

Spelling rules will be taught on a bi-weekly basis.



# Mathematics



- The calculation policy is available to parents on the school website. Children should use the stages appropriate for them.
- You can also support your child by learning the multiplication tables up to  $12 \times 12$
- It is the expectation that all pupils master each times table by the end of Year 4
- Year 4 pupils will participate in the DfE Times Table check in the Summer Term



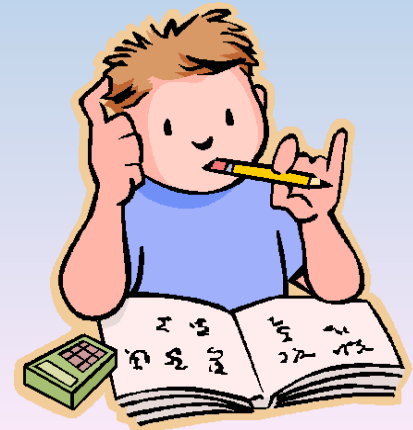
# Homework

Children are expected to read daily, practise spellings set and work on developing mathematical fluency.

Spellings and fluency set on Friday tested the following Friday

Additional tasks will be set half termly linked to learning across the curriculum. These will be added to Google Classrooms / paper copies sent if requested.

**KS2** - Bedrock Vocabulary 2 x per week minimum  
Times Tables Rockstar 2 x per week minimum



# Physical Education



- PE days

**K** – Thursday & Friday

**W** - Monday & Friday

Pupils to come to school in their PE kit on their class PE days (shorts, t shirt, school jumper, trainers or pumps)

Pupils can wear navy blue tracksuit on top of their kit if they wish / Kew tracksuit

Pupils attending a sport based after school club can change at the start of the club

# Physical Education



Please note that

following recommended safety advice no jewellery should be worn for PE  
- including earrings.

They should be removed before the lesson by the child or not worn on PE days

Thank you for your cooperation with this.

# Testing

- Year 4 multiplication check
- Teacher assessments / NFER tests take place throughout the year in other year groups
- Weekly Spelling and Fluency tests each Friday.
- White Rose End of unit assessment for mathematics.

# Attendance and Punctuality

- Pupils are expected to have attendance over 95% and we aim for good attendance at 97% and above.
- Medical appointments should be made outside of the school day where possible.
- For reasons of safeguarding all absences must be reported on the first morning of absence (please call the office).
- **First Response:** if no contact has been made regarding absence a text will be sent asking parents to contact school urgently. If parents do not respond a call will be made.
- Parents should update the office regularly if pupils continue to be absent.
- Attendance under 95% will not be authorised.
- 10% unauthorised absence is referred to Sefton LA for a fixed penalty notice to be considered
- Holidays can no longer be authorised by the Headteacher. If holidays are taken a fixed term penalty notice will be issued.

# Behaviour



The school Relationship Policy is available on the website.

A school Code of Conduct has been written in consultation with the children and they are expected to follow it.

Classes will use the 'Class Dojo' reward system. Parents will be able to follow their own child. The contact the teacher feature is not used by school as a method of communication .



# Our Code of Conduct

The 'Kew Woods Way' means that I am expected:-

- ✓ To do my best
- ✓ To be caring, kind and respectful
- ✓ To listen and work together



CONNECT

KINDNESS

BELIEVE

# Medical Issues

- A form needs to be filled in **before** medicine can be administered in school. Forms are available through the school office. All medicines should be handed to the school office, not the class teacher or teaching assistant.
- Only medicines prescribed by a doctor can be administered. The first dose of medicine must be given by the parents. Cough sweets should not be in school.
- Ensure all inhalers are available in school and are in date.

# Pupil Premium

Pupils may be able to receive financial support from school in various ways if your child is eligible for free school meals or has in the past six years.

Please email or telephone the School Office for further details.





# Bike Permits



- Parents are required to complete a Bike Permit if their child is riding a bike to school.
- Children are requested not to ride their bike or scooter on the school grounds premises.
- Bikes / scooters should be stored at the front of the school.
- A lock should be used to secure them.
- Permits are available from the School Office (call or email to request one).

# Uniform

- Full uniform list available on website.
- School shoes should be black **no trainers**. Children will be asked to wear pumps if they do not have their school shoes,
- No jewellery (apart from **small stud** earrings or a watch).
- Nail varnish should not be worn.
- Please ensure all uniform is labelled.
- Long hair should be tied back at all times with **suitable** hair bands.
- Please ensure haircuts are appropriate for school.

LOST PROPERTY -found under the shelter on the playground.

# School Dinners

Please ensure, if your child has school dinners, that parents order dinners online <https://preorder.lunchhound.co.uk> Please discuss the menu choices with your child. Payment are also to be made online (£2.25 per day).

Please note, pupils in Reception, Year 1 and 2 are entitled to universal free school meals.

Packed lunches should be healthy.



Snacks may be brought for break time but should also be healthy (no crisps, sweets or chocolate)

Only water should be brought into school (not juices)

# Wrap Around Care

Breakfast Club system to book online available

Takes place from 7.50 in the hall daily

KEW Kids After School Club - complete an expression of interest form and email to [kewkids@kewwoods.com](mailto:kewkids@kewwoods.com)

Sessions take place in the old nursery room in school

Bookings must be made in advance



# Communication



- To speak to a member of staff, telephone or email the office and a member of staff will get back to you
- All appointments with staff need to be pre booked via the office
- Anything urgent send in a note or call the office
- Quick messages can be sent via the teaching assistants / teachers on the door in the morning
- Please ensure the School Office has the most current address and telephone number for contactd
- Newsletters are available weekly on website
- Ensure you have accessed Arbor to access messages and information from school



We use Arbor to communicate with parents. It is important we have your up to date email address and phone number.

Please contact the office if you need to make any changes.

# Website



Key school policies are on the website.

Curriculum information and well being support can also be found here.

School newsletters can be found on here every Friday.

If you would like a copy of the newsletter emailed weekly, please advise the Office.