

Kew Woods News

Friday 15th September, 2023



Business Name

Tel: 01704 533 478

Please visit our website:
www.kewwoodprimary.co.uk

Meet The Teacher

Thank you to all who attended the 'Meet The Teacher' meetings. It was fantastic to see so many of you! A copy of the PowerPoint and calculation policy has been added to our website for you to take a look.

ATTENDANCE:

School attendance this week is 95.4% which is above national average. Well done to class RW who had the highest attendance at 100%

Uniform

The children have looked extremely smart since coming back to school. Full uniform and school shoes are to be worn every day except on PE days, when PE kits can be worn. Children can bring in their trainers to change into at lunch time. No jewellery should be worn (apart from small stud earrings or a watch) for health and safety reasons. These must also be removed on PE days. Nail varnish should not be worn and long hair needs to be tied up. Please can you make sure children's uniform is also labelled. Many thanks.

Dates:

September

18th—22nd —Bikeability
6W (dates sent to parents)

27th—Y2 trip to the Eco
Centre

25th—29th —KS2 financial
education workshops

School Council

During assembly today we launched the school council. If your child is interested in being part of the school council they need to prepare a short speech, drawing or poster to outline their reasons for wishing to be elected. This needs to be ready to present to the class next week. Voting will take place on Friday 22nd September.



Follow us on Twitter @kewwoods





Southport
Branch



HRH The Princess Royal to visit Southport for rededication of the War Memorial

Friday 29 September 2023

Southport will welcome HRH The Princess Royal on 29 September to mark the rededication of the town's War Memorial which will be 100 years old on 18 November this year.

Her Royal Highness will be attending the event in her capacity as President of the Women's Section of the Royal British Legion.

The public event will consist of a parade marching from Victoria Park, Southport to the War Memorial where a service will be conducted to mark the re-dedication of the War Memorial. The Atkinson Gallery will also be holding an exhibition of work by local school children based on their reflections on Remembrance.



For further information please contact
southport.secretary@rbl.community

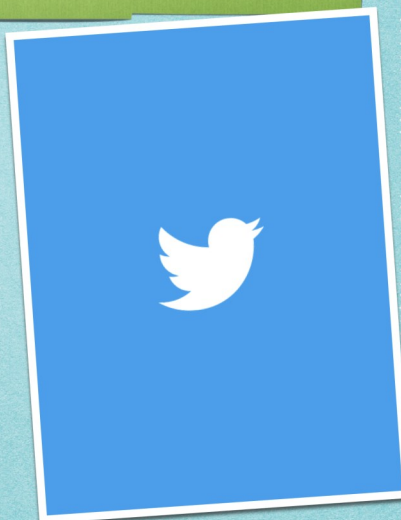


The parade will form up at Victoria Park from 10:30, departing 11:15.
The service will begin at the War Memorial at 12:00.

NEW Class Twitter Accounts

▶ Follow your children's classes at:

- ▶ Nursery @nurserykew
- ▶ Reception @receptionkew
- ▶ Year 1 @Y1Kew
- ▶ Year 2 @Y2Kew
- ▶ Year 3 @Y3Kew
- ▶ Year 4 @Y4Kew
- ▶ Year 5 @Y5Kew
- ▶ Year 6 @Y6_Kew



This Week's Class Dojo Winners

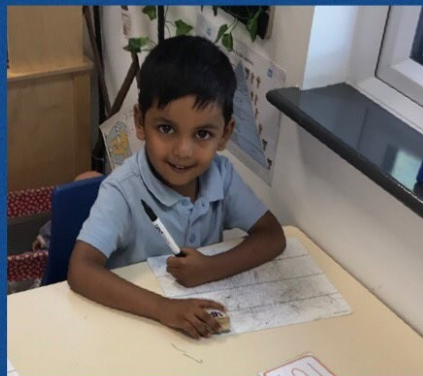
Megan	RK
Maisie	RW
Jasmyn	1K
Sienna	1W
Mia	2K
Joshua P	2W
Charlie B	3K
Bella	3W
Olivia	4K
Flo	4W
Archie	5K
Darcy J	5W
Ryley	6K
Harry S E	6W



Reception 2023



During our first week of Reception we have loved our classroom environment and really been enjoying making new friends.





Reception 2023



Our reception children have really enjoyed exploring our outside classroom.



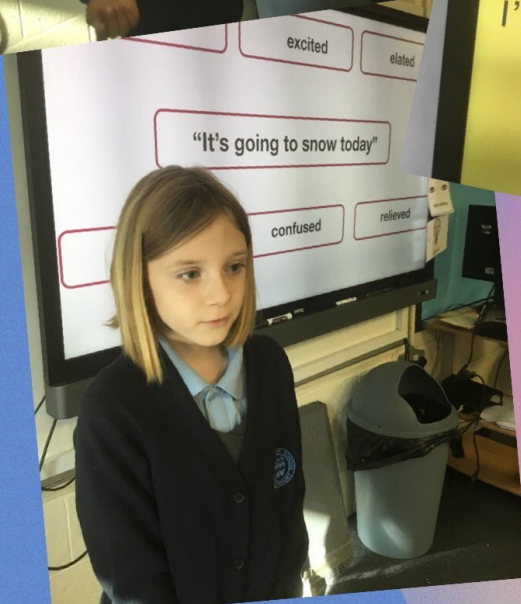
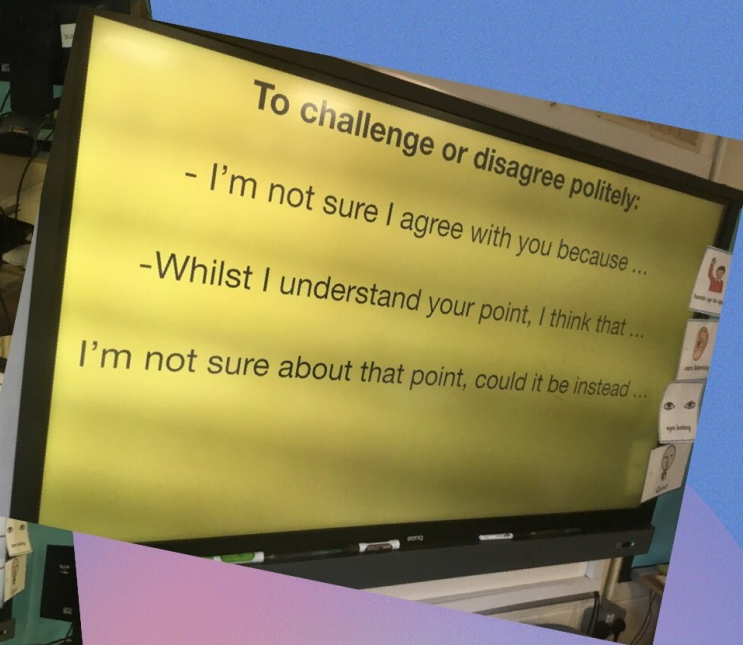
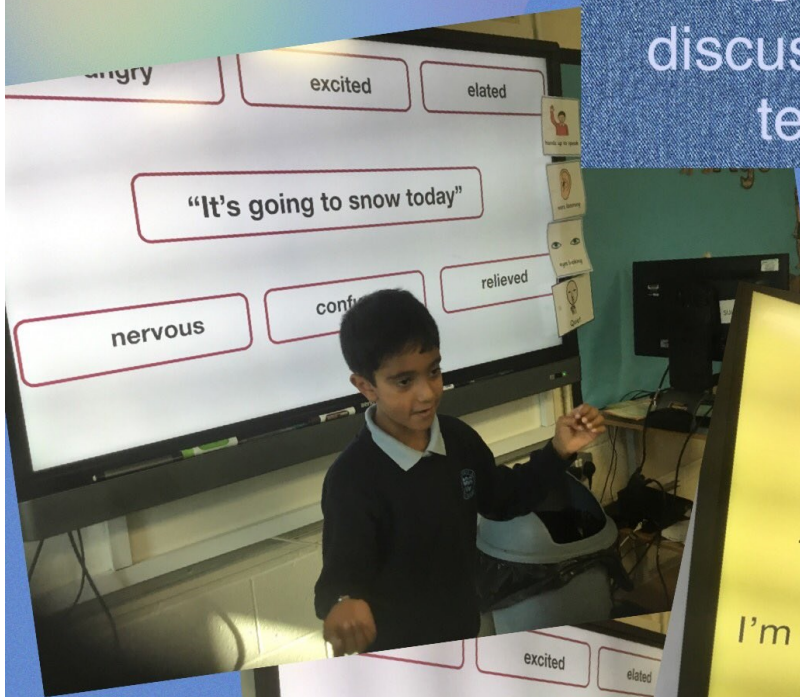
6K enjoying bikeability!



Forest School Fun!



Fantastic oracy skills shown today in 3K whilst discussing our new class text, The Tunnel.



PIC•COLLAGE



Computing in 3K!
Today we had our first lesson in our Computing Hub.
We have started to learn about coding in Scratch.

PIC•COLLAGE

FOOTBALL

Development

Open to Boys & Girls in School
RECEPTION, YEAR 1 till 6



Led by Ex-Professional & UEFA 'A' Licensed Coach

DEVELOPMENT PROGRAMS
£75 for 10-Session Block



USE CODE
'SOUTHPORT'
T&C applies
EXPIRES
18/09/23

SOUTHPORT **NEW**
every Monday 17:00
starting 25 September

Currently Running
BIRKDALE
every Wednesday 17:30

FORMBY **NEW**
every Tuesday 17:00
starting 19 September

Currently Running
BIRKDALE
Thursday 16:30

OCTOBER HALF TERM FOOTBALL CAMP

Venue: FORMBY CRICKET CLUB
Time: 9:30am - 3pm
Dates: MON 23-TUE 24 & THU 26-FRI 27
Price: £65 ALL 4 Days or £18 Per Day



SCAN ME



ANFIELD STADIUM TOUR EXPERIENCE
WEDNESDAY 25 OCTOBER
Additional Cost : £45



ps-sports.co.uk/sessions
07512055904





AT STANLEY HIGH SCHOOL

SPORTS FACILITIES ENTRANCE ON MARSHSIDE ROAD, PR9 9SZ

TUESDAY EVENINGS ONGOING DURING SCHOOL TERM TIMES

(NEW PLAYERS CAN JOIN AT ANYTIME DURING THE YEAR (PROVIDING PLACES ARE AVAILABLE))



Group 1	5:00pm – 6:00pm	Ages 4 - 6
Group 2	6:00pm – 7:00pm	Ages 7 - 8
Group 3	7:00pm – 8:00pm	Ages 9 - 12

Dear Parents,

I am delighted to inform you that following the success of previous year's courses we are expanding the football coaching programme for the season. **The course will run on a weekly basis EVERY TUESDAY** during school term times.

All of our courses are run by **F.A. QUALIFIED COACHES INCLUDING EX-PROFESSIONAL PLAYERS**. All of our coaches have been **DBS/CRB POLICE CHECKED**. The course is open to **Boys and Girls** aged between 4 and 12. All abilities are catered for with total beginners introduced through **FUN** and confidence building practices. The course is tightly structured to ensure all aspects of football skills are developed.

At the end of the term (usually 10-15 weeks) **every child** will receive an engraved merit **Trophy** and course **Certificate**, with chances to win extra trophies including Penalty Shoot out, American Shoot out and Champions League Competitions.

The cost of the course is £7 per week, which is payable every four weeks (£28) with the first payment due on week one. Parents are welcome to stay and watch however the club is fully supervised so children may be left in our care. We have the use of **excellent facilities** including **the large indoor sports hall**.

TO BOOK A PLACE ON TO THE COURSE PLEASE TEXT
'SOUTHPORT' + CHILD'S NAME & AGE + GROUP NUMBER (1,2or3)
 and receive confirmation by text

07856 315 637

Steven Nugent (Course Co-ordinator)



WOLFENDEN

**JUNIOR BADMINTON
CLUB - SOUTHPORT**

**STARTING
8TH SEPTEMBER**

**AGES
11-18**



**£5 TO PAY
ON ARRIVAL**

RACKETS AND SHUTTLES PROVIDED

FRIDAY'S 5.30-6.30 PM AT STANLEY HIGH SCHOOL PR9 9TF

TO BOOK YOUR PLACE OR FOR MORE INFO CONTACT :



tom@wolfendenbadmintonacademy.co.uk

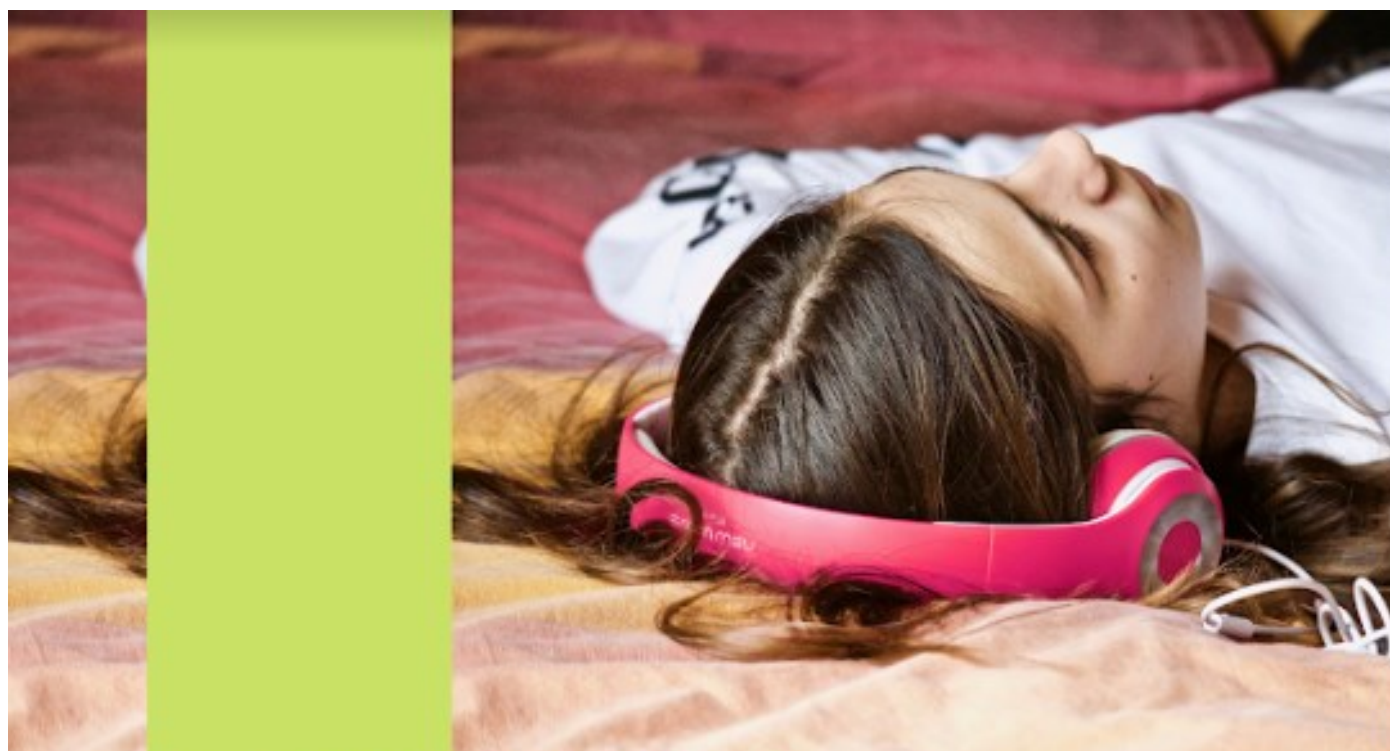


07794052928



<https://www.wolfendenbadmintonacademy.co.uk/>

A FUN NEW CLUB FOR ALL ABILITIES



COMMUNITY YOUTH CONNECTORS



Sefton Council 

Dear Parents,

We are happy to advertise that again, for this school year, we have a Community Youth Connector working with our school. This service offers girls aged 8 years and over psychoeducation support with lower level mental health issues.

This facility is delivered within school time, in the form of 1 to 1 sessions.

For example, your daughter could be displaying needing support with:

Low mood/depression/anxiety and/or panic attacks.

If you feel your daughter needs any support please contact her teacher to discuss this further.