



Meet the Teaching Team

Year 3

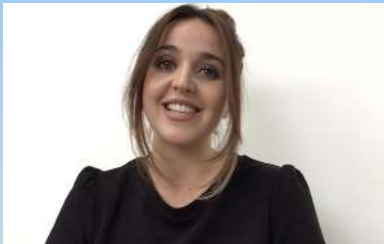
2020 – 2021

Teaching Teams:

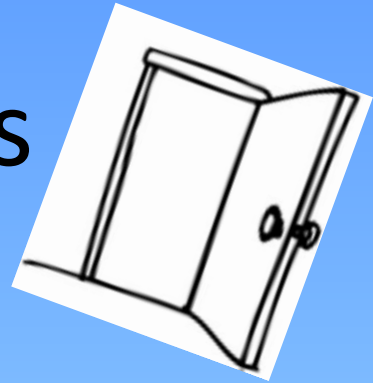
Class 3K – Miss Hunt and Mrs Scott

Class 3W – Mrs McGlinchy

Teaching Assistants – Mrs Dilley,
Mrs McCulloch, Mr McGlinchy, Mr Kane



Daily Entry and Exit Points



3K Enter school via Class door at 8.30-8.50

3W Enter school via door 2 at 8.30-8.50

Exit via same doors as entry at 3.15pm

If your child is being collected by somebody who has not collected before please let us know. A responsible adult, age 16 or over, can collect.

Equipment Required

School bag

Reading Book / Homework Diary

Water Bottle

Packed lunch (if not on school dinners)

Coat

Lunch Time Arrangements

Children go to eat their lunch at 12.00pm.

Dinners are in the hall. 3K packed lunch eat in class and 3W packed lunch in the hall.

The children all go out to play at 12.20pm.

Year 3 have a designated area to play to ensure appropriate distancing from other year groups.

Children return to class at 12.45pm.

Curriculum Recovery

Subject Leaders have looked at where content has not been covered in different areas of the curriculum and planned how to address this.

Pupils will be assessed in Autumn 2 and interventions planned to address any gaps.

Parental Information

Due to current guidance, we cannot hold parent meetings at present. However, information regarding how your child has settled back into school and how they are meeting expectations will be shared with parents before half term.

Curriculum Overview

English and Mathematics taught daily
Phonics, Spellings and Handwriting are taught three times per week.

Weekly lessons of Science, Religious Education, Personal, Social, Health Education, Relationship and Health Education, Music and French (in KS2)
Physical Education lessons twice per week.

Other foundation subjects (Art, Design and Technology, History, Geography) taught every two weeks.

The National Curriculum forms the basis of the curriculum at Kew Woods Primary School identifying what pupils are expected to know and understand.

However, our additional school curriculum provides our pupils with wider knowledge, skills and understanding unique to our school.

Basic Principles

1. Learning is a change to **long-term** memory.
2. Our aims are to ensure that our pupils experience a wide breadth of study and have, by the end of each key stage, **long-term memory** of an ambitious body of **knowledge**.

Curriculum Design

Based on evidence from cognitive science, learning has not taken place until it is in the long term memory.

Within our curriculum, retrieval of previously learned content is frequent and regular, which increases both storage and retrieval strength.

Retrieval practice of previous knowledge is built in to promote learning.

Relationship and Health Education

We want all of our children to grow up healthy, happy, safe, and able to manage the challenges and opportunities of modern Britain. That is why, from September 2020, all primary age children will be taught Relationships and Health Education in age appropriate ways.

Relationship Education

Families and people who care for me

Caring friendships

Respectful relationships

Online relationships

Being Safe

Health Education

Mental Well Being

Internet safety and harms

Physical health and fitness

Healthy eating

Facts and risks associated with drugs,
alcohol and tobacco

Health prevention

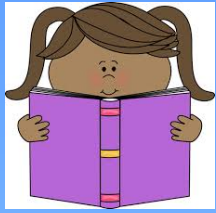
First aid

Changing adolescent body

Educational Visits

At present, to keep our pupils safe, educational visits are not planned for this term. This will be reviewed as new guidance on bubbles is received.

We hope to provide the following educational visits this year: Trip to Chester – related to Romans topic



Reading



Children will have three guided reading sessions with their teacher per week.

- Children will be given a colour banded reading book suitable for their ability which will be changed on Monday, Wednesday and Friday if they've been read. On these days if your child has finished their book they will be asked to put it in a box for isolation on their way into school. This will not be done on a Tuesday and Thursday.
- A new reading scheme will be starting shortly for **some** children with more details to follow.
- We expect children to read every night at home and for parents to record this in yellow reading diaries. Please encourage your child to reread texts to consolidate their understanding.

Spelling / Phonics

We follow the read write inc. programme for spelling in school.

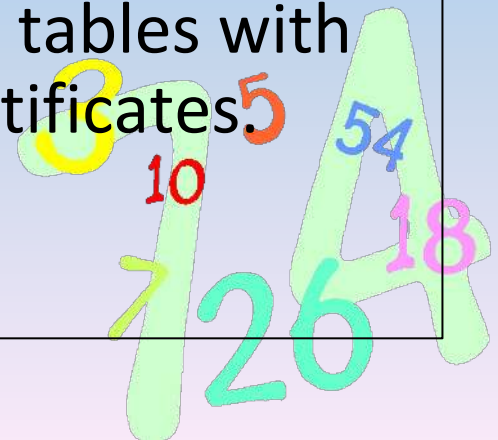
A new spelling pattern is learned each week through lessons in school. Spellings will be sent home on a Friday and tested the following Friday.



Mathematics



- The calculation policy is available to parents on the website.
- Children should use the stages appropriate for them when completing homework.
- You can also support your child by learning the multiplication tables: **X3, X4, X8.**
- We have a scheme in school whereby children who can demonstrate they know their times tables with quick recall, can receive badges and certificates in Bronze, Silver and Gold.



Homework Timetable

All homework for the Autumn first half term will be set online via Purple Mash. This will then be reviewed and further details will be sent home. If pupils required their log on to be reissued or have no access to technology at home please advise the class teacher.

Homework set

Homework to be completed and returned

Monday

Tuesday

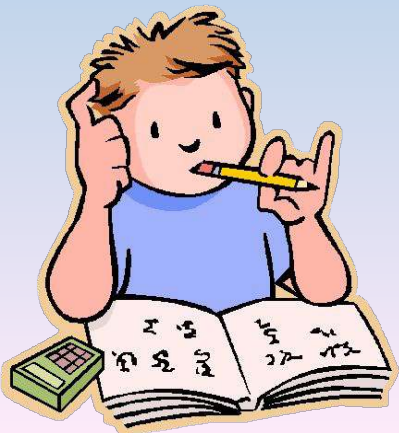
Wednesday

English and Maths.

Thursday

Friday

English, Maths and Spellings.



Physical Education



- PE days

3K – Tuesday and Wednesday

3W – Wednesday and Friday

Pupils to come to school in their PE kit on their class PE days (shorts, t shirt, school jumper).

Pupils can wear pumps or trainers on their PE days too.

Pupils can wear navy blue tracksuit bottoms on top of their kit if they wish.

Testing

- White Rose end of unit assessment for mathematics.
- Half termly grammar and spelling tests.
- Weekly spelling test.
- Children will also complete a reading comprehension and a maths assessment every half term to monitor ongoing progress.

Attendance and Punctuality

- Pupils are expected to have attendance over 95% and we aim for good attendance at 97% and above.
- Medical appointments should be made outside of the school day where possible.
- For reasons of safeguarding all absences must be reported on the first morning of absence (please call the office).
- **First Response:** if no contact has been made regarding absence a text will be sent asking parents to contact school urgently. If parents do not respond a call will be made.
- Parents should update the office regularly if pupils continue to be absent.
- Attendance under 95% will not be authorised.
- 10% unauthorised absence is referred to Sefton LA for a fixed penalty notice to be considered.
- Holidays can no longer be authorised by the Headteacher. If holidays are taken a fixed term penalty notice will be issued.

Keeping our Children Safe

- If your child displays any signs of Covid (**high temperature, new, continuous cough, a loss or change to sense of smell or taste**) they should not attend school, isolate for at least 10 days and should take a test.
- Other members of the household should isolate for 14 days.
- Please inform the School Office of the outcome of any test at the earliest opportunity.

- If a child shows any Covid symptoms whilst in school, parents will be called.
- Pupils will be isolated within school.
- We ask that parents arrange for collection of their child / children urgently.

Negative Test Result

If a pupil tests negative, if they feel well and no longer have symptoms similar to coronavirus (COVID-19), they can stop self-isolating. They could still have another virus, such as a cold or flu – in which case it is still best to avoid contact with other people until they are better. Other members of their household can stop self-isolating.

Positive Covid test result

- If your child has a positive test result, they should remain at home and self isolate for at least 10 days from the onset of symptoms. If they still have a temperature they should keep self isolating until their temperature returns to normal.
- Other members of the household should continue self isolating for the full 14 days.

- If a child or adult in your child's class has a positive test, we will work closely with the local health protection team
- All pupils who have had close contact with the person testing positive, will be sent home or asked to remain at home, self isolating for 14 days
- **Close contact means:** face to face contact with an infected individual for any length of time, within 1 metre, including being coughed on, a face to face conversation, or unprotected physical contact (skin-to-skin) / proximity contacts - extended close contact (within 1 to 2 metres for more than 15 minutes) with an infected individual / travelling in a small vehicle, like a car, with an infected person

- Household members of those who are sent home do not need to self-isolate themselves unless the child who is self-isolating subsequently develops symptoms.
- If someone in a class or group that has been asked to self-isolate develops symptoms themselves within their 14-day isolation period they should follow the advice to self isolate and obtain a test.



What will happen if someone becomes unwell at an educational setting?



General Information for Parents and Carers

Does the pupil have a new, continuous cough, or a high temperature, or a loss of, or change in, their normal sense of taste or smell (anosmia?)

Yes

The pupil must not come into the educational setting. They must follow ['stay at home: guidance for households with possible or confirmed coronavirus infection.'](#) The parent/carer should notify the educational setting.

They should self-isolate for at least 10 days from when symptoms start and should arrange to have a test to see if they have COVID-19. Other members of their household (including any siblings) should self-isolate for 14 days from when symptoms began in the suspected case

No

You should follow the normal sickness procedure for the educational setting

Book a test at www.gov.uk/get-coronavirus-test or by telephone (NHS 119) if you do not have internet access. Tests should be booked as soon as possible no matter how mild symptoms are.

POSITIVE RESULT

If the pupil tests positive they must **continue to self-isolate for at least 10 days** from the onset of their symptoms and inform their educational setting immediately. They should only return to school if they do not have symptoms other than cough or loss of sense of smell/taste. If they still have a high temperature, they should **keep self-isolating until their temperature returns to normal**. Other members of their household should continue self-isolating for the 14 days.

NEGATIVE RESULT

If the pupil tests negative, they can return to the educational setting and stop self-isolating when they are well and free from symptoms. Other members of their household (including siblings) can stop self-isolating too.

If you are contacted by Public Health England (PHE) as a contact of a case, you must continue to self-isolate for 14 days even if you test negative.

Frequently Asked Questions – Other Guidance for Parents and Carers

What happens if a pupil becomes unwell with symptoms of COVID-19 (a new, continuous cough, or a high temperature, or a loss of, or change in, their normal sense of taste or smell) in an educational setting?

- The pupil will be sent home and should follow 'stay at home: guidance for households with possible or confirmed 'coronavirus infection' with members of their household (including siblings.)
- Whilst the pupil is awaiting collection, actions to improve ventilation and minimise contact will be taken
- Following collection staff will follow hand hygiene processes and will clean any affected area.
- The educational setting will inform parents, carers and pupils if additional actions are required.

When a pupil or staff member has attended an educational setting and tests positive, the educational setting will inform parents and carers about additional actions that are required. The educational setting will receive support from PHE and Sefton Council.

What happens for other pupils if a pupil or member of staff tests positive after attending an educational setting?

The educational setting will inform parents and carers about additional actions that are required. The educational setting will receive support from PHE and Sefton Council.

What happens if there is an outbreak in an educational setting?

Where an outbreak in a school is confirmed by Public Health England, different actions will be taken, and educational settings will follow PHE advice. For example, PHE may recommend that a larger number of pupils self-isolate.

Celebration Assembly

Under current guidance school cannot invite families into school.

We can not hold full school assemblies at present.

Pupils will still be celebrated and a photograph will be sent home to parents.

Behaviour



The school Behaviour Policy is available on the website and the Home School Agreement has been shared with parents.

A school Code of Conduct has been written in consultation with the children and they are expected to follow it.

Classes will use the 'Class Dojo' reward system. Parents will be able to follow their own child. The contact the teacher feature is not used by school as a method of communication .

Our Code of Conduct

The 'Kew Woods Way' means that I am expected:-

- ✓ To do my best
- ✓ To be caring, kind and respectful
- ✓ To listen and work together



CONNECT

KINDNESS

BELIEVE

Medical Issues

- A form needs to be filled in **before** medicine can be administered in school. Forms are available through the school office or school website.
- Only medicines prescribed through a doctor can be administered. The first dose of medicine must be given by the parents. Cough sweets should not be in school.
- Ensure all inhalers are available in school and are in date.

Pupil Premium

Pupils may be able to receive financial support from school in various ways if your child is eligible for free school meals or has in the past six years.

Please email or telephone the School Office for further details.





Bike Permits



- Parents are required to complete a Bike Permit if their child is riding a bike to school
- Children are requested not to ride their bike or scooter on the school grounds premises
- Bikes / scooters are stored at the front of the school
- A lock should be used to secure them
- Permits are available from the School Office (call or email to request one)

Uniform

- Full uniform list available on website
- School shoes should be black **no trainers**. Children will be asked to wear pumps if they do not have their school shoes
- No jewellery (apart from small stud earrings or a watch)
- Nail varnish should not be worn
- Please ensure all uniform is labelled
- Long hair should be tied back at all times with **suitable** hair bands. This includes boys
- Please ensure haircuts are appropriate for school

School Dinners

Please ensure, if your child has school dinners, a menu sheet is completed. A new menu will be available from week 3 (w/c 21st September) of the school year. menu sheets will be sent home shortly.

If the menu sheet is not completed, lunch choice A will be given.

Packed lunches should be healthy.

Snacks may be brought for break time but should also be healthy (no crisps, sweets or chocolate).

Only water should be brought into school in water bottles.



Wrap Around Care

After school provision / Breakfast Club is available again

- Bookings must be made in advance at present
- Call the office to request an Expression of Interest Form
- Email : kewkids@kewwoods.com

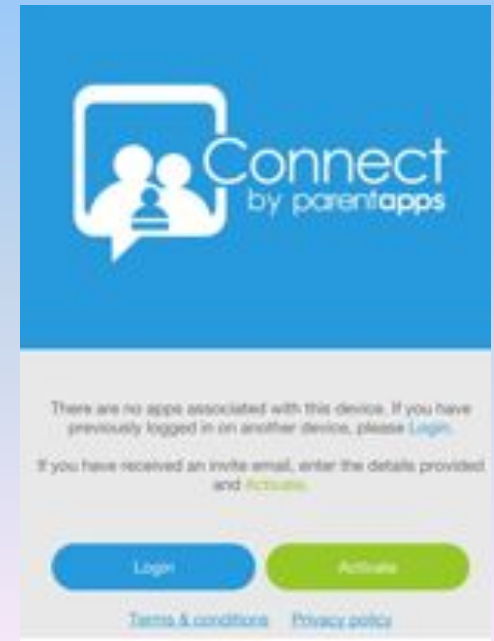


Communication



- To speak to a member of staff, telephone or email the office and a member of staff will get back to you
- All appointments with staff need to be pre booked via the office
- Anything urgent send in a note or call the office
- Quick messages can be sent via the Teaching Assistants on the door in the morning
- Please ensure the School Office has the most current address and telephone number
- Newsletters are available weekly on website
- Ensure you have accessed Parent App to access messages and information from school

We use the Kew Woods App (PA Connect) to communicate to parents. It is important you have this app to receive messages and important information. Please contact the office if you do not have the app and would like the activation code resending.



Website



Key school policies are on the website

Curriculum information and well being support can also be found here

Copies of important whole school letters are also available here

School newsletters can be found on here every Friday

If you would like a copy of the newsletter emailed weekly, please advise the Office

Finally...

**Thank you for taking
the time to read
the year group
information**